

Finding a hospital automation partner

3 key points to consider in your transformation journey

In 2023 we have an urgent need to rethink the future of hospital pharmacy.



25%

of incidents in hospitals relate to medications errors



\$1.4 billion

cost of medication related admissions



100,000

clinical vacancies in nursing by 2025



250,000

Hospital admissions annually in Australia are medication related

To make hospital workflows safe and efficient for your patients and staff, automation is key.

Many hospitals across Australia have come to this same conclusion and have initiated the process of adding automated solutions to their pharmacies and clinical areas. One of the difficulties that may be faced in adding automation, is finding the right partner. This short guide has been developed to help you overcome this challenge.

Getting started

Before introducing the three key points, here are some useful tips.

Determine critical areas of need

Automation can be implemented throughout the patient care journey - from medication management, including controlled substances, through to gaining visibility of supply inventory.

Most hospitals will look to automate ED and ICU first, as these areas are often the most impactful. These areas are:

High Risk

ED & ICU hold the largest variety of medications in the hospital and are managing some of the most vulnerable patients.

High Cost

Medication expenditure in Critical Care units is amongst the highest throughout the hospital. Automation helps secure and manage these high-value items and assists in accuracy of administration.

High volume

Staff need rapid access to medications to maximise administration efficiency, this is essential given the increasing number of hospital presentations and requirement for improved patient flow.



Finding a hospital automation partner

3 key points to consider in your transformation journey

Determine your main objectives

Once the areas for optimisation have been established, consider the outcomes to be achieved through automation. Some of these could include:

- Reduce inventory stock holding
- Reduce patient selection and medication selection errors during administration process
- Increase transparency of medication usage
- Reduce risk of diversion

Outlining objectives will provide a better understanding of what your partner can deliver.

Write your business case

Create a robust business case outlining the reasons for developing an automated environment to manage medication throughout the hospital. This will eliminate the need for many manual processes and workflows.

It is crucial to involve stakeholders in this early stage of the project to ensure a successful implementation. During this developmental stage of the project, it is essential to involve the experienced partner to provide guidance and scope where needed.

3 Key points to consider in your search for a hospital automation partner

1 Is their system compliant with Australian Regulatory requirements?

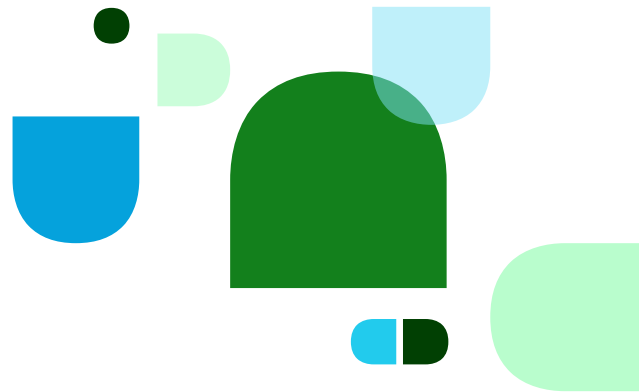
There are comprehensive Australian state regulations for the management of medications, particularly for controlled drugs (CDs).

Finding a partner who can meet regulatory standards in your state should be the first step in your journey. Without this, already complex processes become more costly and inefficient. For example, MedX is a management system for medication and controlled drugs, which has been developed by Omnicell and tailored to meet Australian hospital regulatory requirements. Having the right product, from the right partner for your hospital results in improvements in patient safety, medication errors and inventory costs.



Ascertain whether solutions from a potential partner meets required standards.






Finding a hospital automation partner

3 key points to consider in your transformation journey

2 Are their solutions interoperable with our current IT systems & adaptable to our future requirements?

Let's talk about IT systems

Integration with hospital systems (such as EMR or PAS) is essential for a seamless clinical workflow. Hospital needs can change with time, therefore, finding a partner that not only integrates with your current IT infrastructure, but will easily communicate and interface with other vendors is paramount.

 Seamless system integration will save you costs and prevent future inefficiencies.

Adaptability to future requirements

Each hospital has needs specific to their staff and workflows. Adaptability in this context means being able to meet these changing demands.

This might include the ability to provide tailored and flexible solutions, such as:

- ward-specific configurations for automated dispensing cabinets that will allow them to be reconfigured in the future as needed
- custom-designed central pharmacy robotic systems capable of fitting within the dimensions of your available space

Partners focused on the most effective outcomes for your hospital will incorporate flexibility within their solution designs and implementation approach.

3 Are there any available reference sites?

Provide insight into the relationship you might have with your future partner and how they manage projects.

Excellence in project management is key to the successful implementation of an automation project. Some areas of focus for reference sites should include:

- installation experience
- expertise in workflow implementation
- communication and support following installation

A visit to a reference site will offer the opportunity to clarify any questions you may have.



An ideal partner will understand all aspects of your automation project and provide an adaptable solution to help you achieve your established outcomes.

Next installment, learn key recommendations for your automation journey.



If you want learn more about partnering with Omnicell **contact us now**