



Medical Supply Management Solutions

Maximise your impact by tackling your biggest pain points



“ Whatever your starting point may be - we were worse! For Main Theatres and other high value areas... the order and inventory control processes were all paper based / manual with no materials management support, no inventory system, no catalogues – nothing but lots of inventory.”

David Lawson, Chief Procurement Officer,
Guy's and St Thomas' NHS Foundation Trust, UK




Health systems are under immense pressure and managing medical supplies is critical to delivering patient care.

A lack of adopting safety standards and automated inventory management solutions, can result in an increased **risk to patient safety, drained resources due to overstocking, a lack of control, unmonitored expiry dates, an increase in last minute stock-outs and wasted clinical time.** These issues can adversely impact hospital's day-to-day activities and consequently have a huge impact on patient care, including risks of last minute cancellations and tracking issues.

Reliable, compliant, connected and easy-to-use solutions are essential to ensure that cost-effective and high-quality products are used to deliver safe and efficient outcomes and care for patients.

Unveiling the transformation power of automating medical supplies

Before	After
Messy storage 	→ Organized and clean store rooms 
Exhausted nurses trying to find the right supplies 	→ Happy employees 
Last-minute sourcing of missing implant 	→ No canceled operations 
No control or visibility of medical supplies 	→ Overview and analysis to take informed decisions 
Overspending and wasting money 	→ Saving money 

Hospitals are often left considering numerous options to support them on this journey and these are invariably fraught with understanding complex equipment and securing significant investment.

Supporting hospitals with end-to-end management of medical supplies

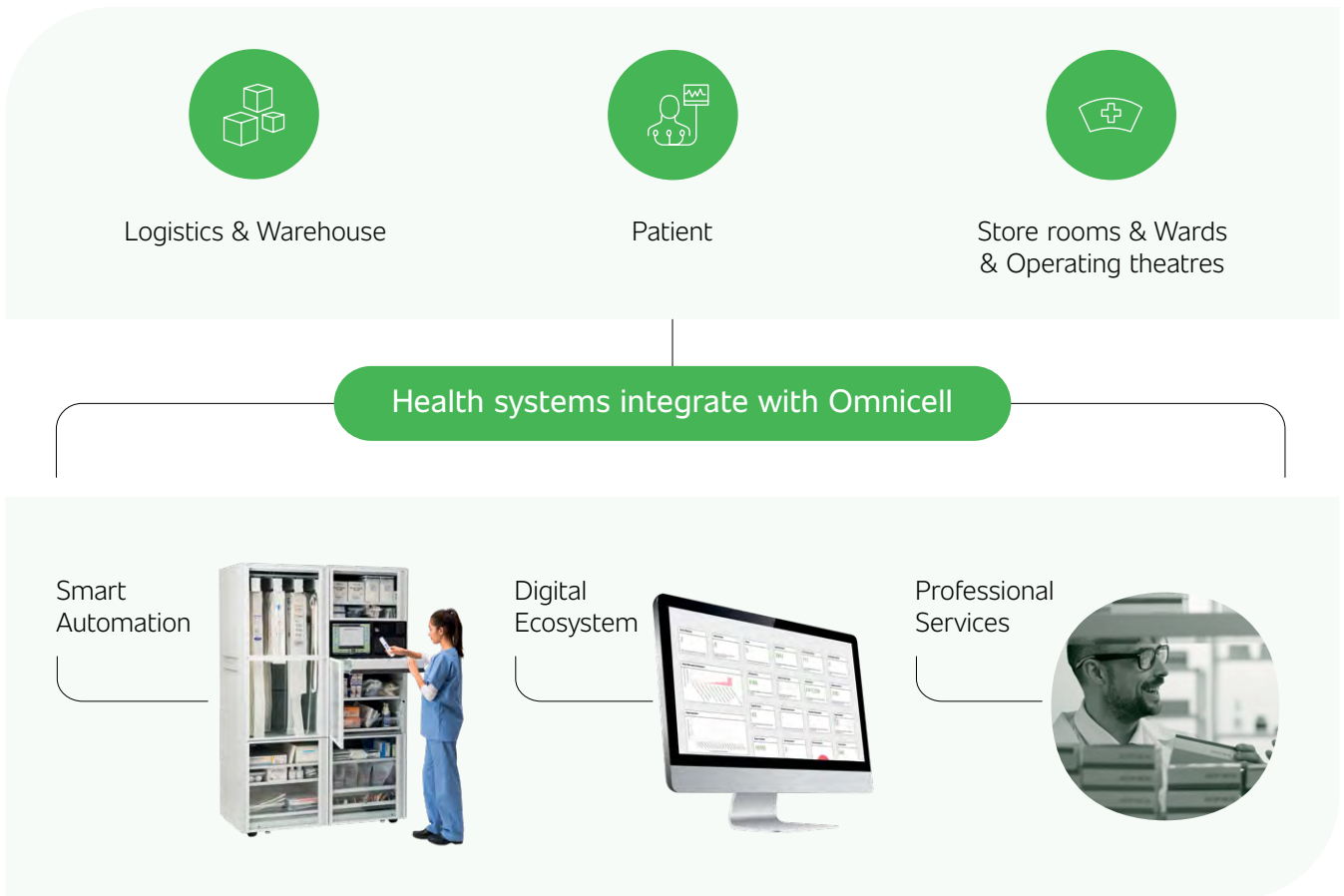
Omniceil is uniquely positioned with a combination of Smart Automation, a Digital Ecosystem and Professional Services to manage all types of medical supplies.

Our automation pillar: with **smart equipment** in each area, and with a major differentiator: **our flexibility**

Our digital suite: We're **doubling down on digital connectivity** across all of our systems to ensure you have **complete visibility of your operations**.

Finally, our Professional Services teams are there to **accompany you on your journey to automation**.

What is critical and differentiate us: we provide a **seamless integration with your IT infrastructure**. We have **+10 years experience partnering with major EMR players**.



Omnicell Medical Supply Solution



SupplyXpert Inventory Management Solution

Complete stock management through SupplyXpert



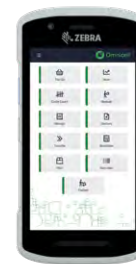
RFID Supply cabinet



XT Supply cabinet

CLOSED
+

OPEN



SupplyXpert handheld device

High tracking need supply items or implants (UDI) & High-Medium value, implants or consigned supply items

Open shelf supply items

← CLOSED SYSTEM

OPEN SYSTEM →

The hardware for closed systems

Automated Dispensing Cabinets for Supplies

Omniceil XT Automated Supply Dispensing Cabinets create a more efficient and effective way to manage consumable medical supplies. The solution has been thoughtfully designed to help hospitals achieve greater inventory control and improve recall management.

Features and benefits:

- Ideal for managing high value supplies as they keep items secure while being easily accessible
- Larger capacity to help reduce stockouts
- Bright guiding lights guiding you directly to stock
- Lot, serial number and expiration date tracking
- Remote queuing
- Automatic re-ordering



Omniceil's RFID Cabinet

The RFID Cabinet is an intelligent, restricted-access cabinet system which uses RFID technology for the safe storage and management of high-cost supplies, implantable devices and trauma trays - where you need to take and return multiple items at once. All items in the cabinet are RFID tagged and the system quickly records everything in the cabinet, instantly confirming what has been taken, returned or restocked.

It provides real-time information about all dispensed and returned products, allowing for:

- automatic movement registration, inward and outwards, without scanning barcodes or pressing buttons.
- the allocation of costs per patient or surgical procedure
- automatic traceability of batch/serial numbers.

The software for open and hybrid storage systems

SupplyXpert

SupplyXpert is the only tech enabled services that can manage inventory for both open and closed area with included clinical data expert to help you achieve outcomes on a yearly basis. The solution can integrate with other hospital reporting systems.

Scanning of medical supplies can be done with handheld scanners, tablets, or a mobile telephone. These can be used in conjunction with cabinet systems or stand alone in open storerooms, theatres or laboratories. The ability to use this software on a range of handheld devices means that it's ideal for large storerooms or case picking rooms where staff are picking supplies for multiple patients at the same time.

The software allows hospitals to track and cost everything at a patient, procedure and consultant level, providing an understanding of cross-department spending and allowing for the most economic and efficient care pathways to be identified and adopted.



	SupplyXpert software + handheld	SupplyXpert software + handheld + XT cabinet
Why?	Gain remote medical supply inventory management capabilities for smaller inventories and area where an XT cabinet is not possible	Move to the next level of automation by connecting the dots and gain more nursing time focusing on patient care
Offering	<p>How it works: SupplyXpert collects your medical supply data from a mobile handset.</p> <p><i>Including:</i></p> <ul style="list-style-type: none"> The module "Order" is to manage inventory for ordering and restocking of store rooms, bulk areas or shelves. It reduces staff time spent on managing and ordering stock. At the same time valuable funds are not wasted as no unnecessary stock is ordered. Patient data capture Restock of supplies is done fast and accurate as the barcode of the restocked item is scanned, automatically capturing lot, serial number and expiration date. 	<p>How it works: SupplyXpert collects your medical supply data from XT cabinet automatically.</p> <p><i>Including:</i></p> <ul style="list-style-type: none"> Benefit from all the advantages of the handheld scanner, including the reporting module, which provides extensive stock visibility and advanced reports on supplies stored in closed and open areas. The case picking module, enabling nurses to quickly pick supplies and implants for a surgery based on the surgeons' preference cards. Enables one-off orders

Supporting you on your journey to supply chain management excellence

Some early adopters of automated inventory management solutions are using a blend of solutions and the data drawn from these solutions to manage stock from when accepted at delivery, to the point of patient care.

These hospitals have implemented solutions based on the following factors:

- value of items
- propensity to cause discrepancies in stock holding
- workflow demands of the individual department.



High tracking need supply items or implants (UDI) and trauma orthopaedic are managed by the effortless RFID Cabinets.

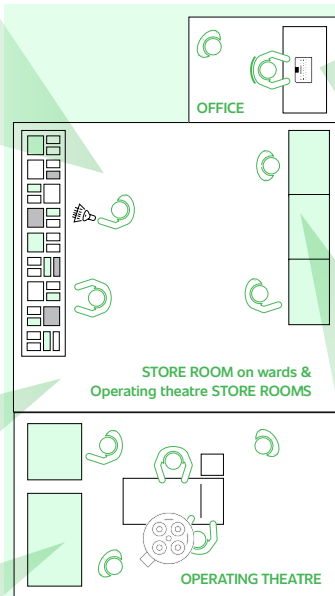


Real time stock level information dashboard and reporting suite. It will link to your hospital reporting system to control and report on open and closed stores.



All low-cost stock and patient costing are managed using Omnicell SupplyXpert handset, with materials and perpetual inventory management teams running "top-ups" on the wards.

Also enables detailed tracking of implants and other high-cost items at the point of use in operating theatres.



High-Medium value, implants or consigned supply items are managed by Omnicell XT Supplies Automated Dispensing Cabinets for additional compliance and security.



Integration that simplifies

Our solutions not only integrate with each other to give you a live dashboard of your stock across all your sites, but can also import and export data from other hospital systems. Omnicell uses its own interface engine and has over 6000 working interfaces, including those with most of the systems used for:

- Patient administration
- Theatre management
- Procurement and finance
- Catalogue management
- Patient costing

Typical interfaces include:

- Patient demographics
- Reordering
- Receipting
- Catalogue update
- Patient costing or billing
- Theatre/Cath lab scheduling/cases/
preference cards

Each of our systems simply connects to your existing hospital network (wired or wireless) to communicate with the Omnicell server. We can provide a fully configured enterprise class server, a cloud server or a VM image for your virtual environment.



Defining.
Delivering.
Outcomes.